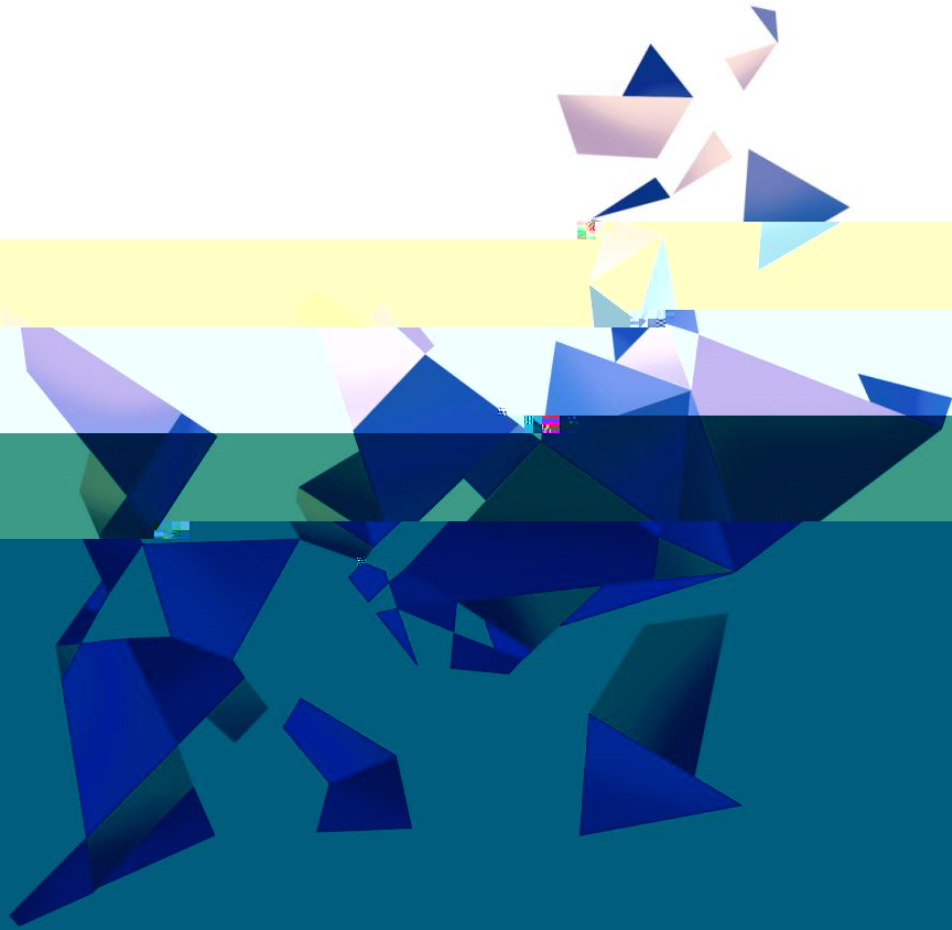


KP2H/KP4H

Pandora series

Version: v1.0

release date:December 2021




北京科星

Beijing KYSTAR

Version record

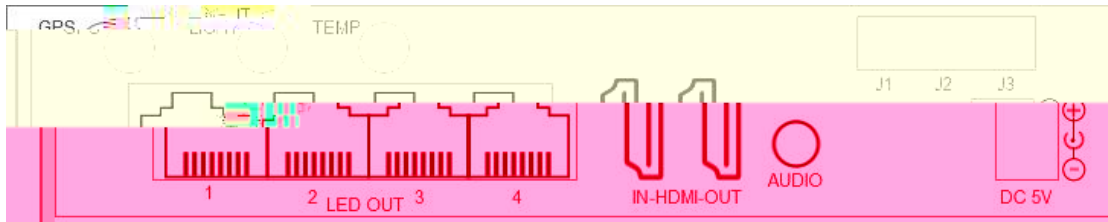
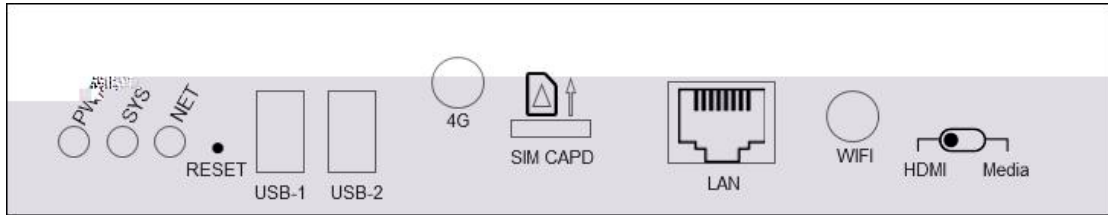
Beijing KYSTAR Technology Co., Ltd. launched asynchronous Pandora box for LED full color screen

Here introduces the common connection mode of Pandora box and the operation steps of the management software Kommander PE.

Name	Type		Get address
Pandora box	Mobile	Android	
		IOS	Search “kystar box” in Apple store
Kommander PE	PC	Windows	http://www.kystar.net/Down/82.html

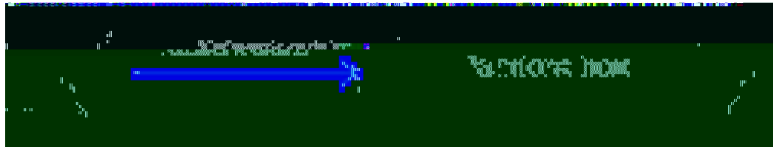
information

Type	Name	Password
Connect Pandora WiFi Hotspot	KYSTAR+model+SN+4 digits E.g KP4H-21070001	8888 8888



Name	Function introduction
PWR	The power indicator is always on, indicating that the power supply is normal
SYS	The system and app start normally, and the sys is always on; The system starts normally, but app fails to start, sys flashes, once per second System upgrade process, sys flashes rapidly, 4 times per second
NET	When there is PC/mobile connection, the NET light is always on, otherwise it is off; When connecting to the cloud platform, NET flashes once per second; Upload program, NET flashes fast, 4 times per second
RESET	Factory reset button, keep press for 5 seconds to factory
USB1-2	USB2.0*2, update programs item and set up Pandora box via U disk
4G	4G communication module antenna interface, can be used for 4G communication
SIM CAPD	4G card slot, supports 4G cards of three major operators
LAN	100M input network port, connected to LAN, can be directly connected to PC
WIFI	Dual mode WiFi supports WiFi AP and WIFI SAT WiFi AP: WiFi hotspot connection available WIFI SAT:Can be connected to a router
HDMI\Media	Dual Mode Switch HDMI HDMI priority Media Async mode
GPS	GPS antenna interface for use in scenarios that require positioning and precise timing
LIGHT	Brightness sensor interface
TEMP	Temperature and humidity sensor interface
LAN1-4	Four gigabit output network ports, connected to all series KYSTAR receiving cards
HDMI	IN:HDMI 1.3 Input interface, external signal

	OUT:HDMI 1.3 Output interface, loop out signal
AUDIO	3.5mm audio output
J1\J2\J3	3-channel relay control switch,
5V DC	Provide 5V/4A power supply



Required configuration

Wired LAN connection



Required configuration

WiFi Hotspot connect



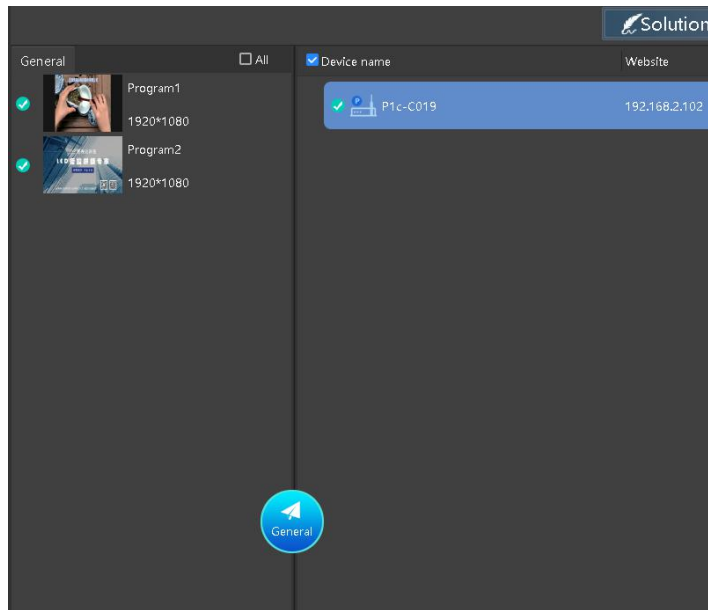
Required configuration: WiFi hotspot antenna interface Pandora WiFi password 88888888



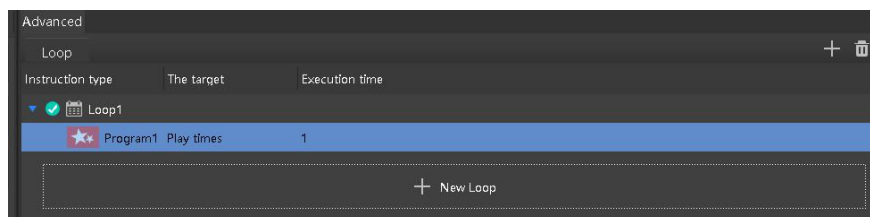
1. Program production

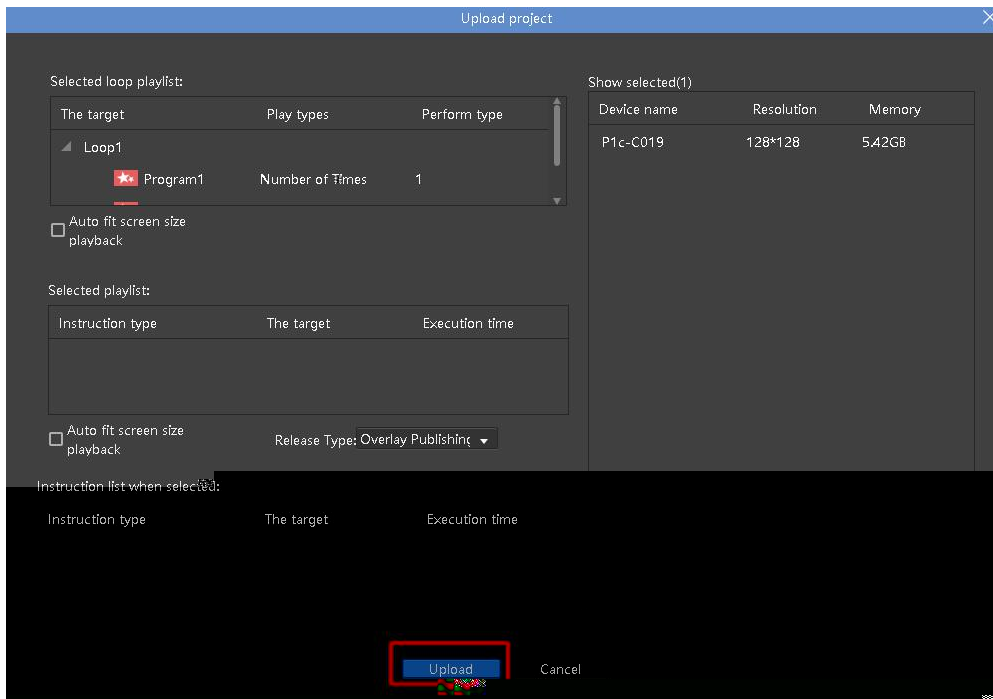
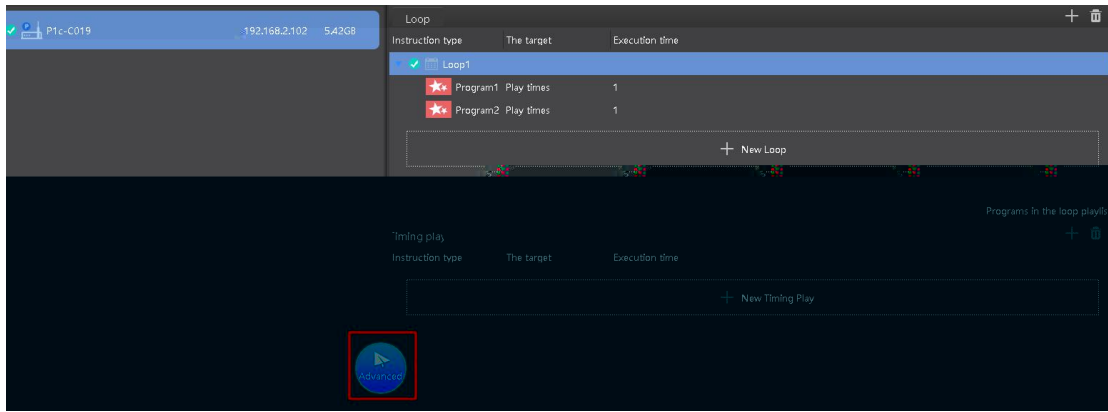
②

2. Release program



Advanced release





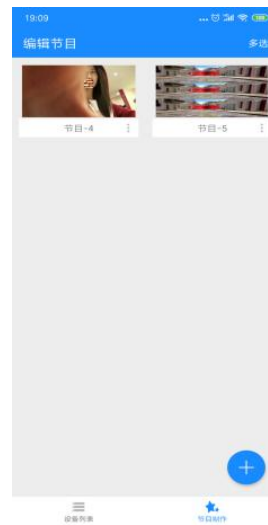
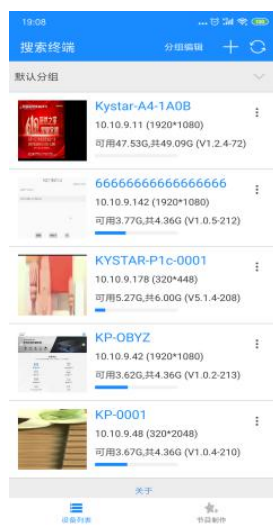
3.

Step1 Select the equipment to be operated

Step2 Select the function that needs to be controlled by the terminal.



1. Software layout



2. Software function

device management

Group and rename devices for easy management

Step mobile connect local network——open Pandora app——Refresh to get the device

Program production

Add and arrange materials

Step Program production——blue+mark——set program information——unload material

Terminal control

Set the brightness of the terminal device; volume; switch, etc.

Step Select the device in the device list-secondary menu terminal configuration-select the desired setting

Program management

To switch the program list and set the timing playback

Step Device list Selected device-secondary menu Program list-play/download/delete

Mobile phone debug screen

Wizard debug screen by mobile phone

Step Select the device in the device list-secondary menu screen adjustment-enter the administrator debug screen